

# AE Faulks Ltd

**AE Faulks Ltd** hires out operated and self drive plant throughout the West Midlands and East Midlands regions, providing up-to-date first class equipment from leading manufacturers, complete with a wide range of attachments. For full details visit our website:

[www.aefaulks.co.uk](http://www.aefaulks.co.uk)

## FIRST CLASS SERVICE

1<sup>st</sup>

Our aim is to become **your first choice** for construction plant hire by providing value for money with unbeatable reliable service.

Our hire desk is staffed by **experienced** hire professionals, who can provide advice on machine and equipment capabilities, specifications and 'fit for purpose' applications.

**Faulks Plant** operatives have many years site experience, are CPCS Blue card accredited and 'fitness for work' certified with the capability to operate the machinery at its most productive.

## TERMS & CONDITIONS OF HIRE

Plant is hired subject to CPA model conditions for the hire of plant. A copy of the hire conditions are available on request or by downloading from our website:



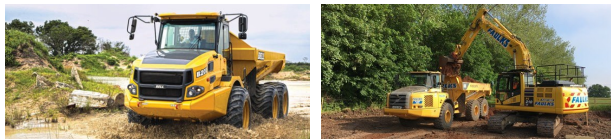
[www.aefaulks.co.uk](http://www.aefaulks.co.uk)

**01664 822797**

# AE Faulks Ltd

[www.aefaulks.co.uk](http://www.aefaulks.co.uk)

## OPERATED PLANT



## SELF DRIVE PLANT



## ROAD SWEEPERS & TIPPER LORRIES



## AGRICULTURAL TRACTORS



# AE Faulks Ltd

The Wharf, Main Street, Hickling  
Melton Mowbray, Leicestershire LE14 3AH

**01664 822797**

# Faulks

Reliability • Safety • Quality

[www.aefaulks.co.uk](http://www.aefaulks.co.uk)



Operated  
Plant Hire



Self Drive  
Plant Hire



Sweeper  
Hire



Tipper  
Hire



Tractor  
Hire

**Hire Desk**

**01664 822797**

Email: [planthire@aefaulks.co.uk](mailto:planthire@aefaulks.co.uk)



## HEAVY PLANT LINE

Tracked Excavators: 10t, 14t zero tail swing (rubber tracks available), 22t.  
 Dozers: Cat D5 & D6 equivalent LGP (2D, 3D & GPS)  
 Dump trucks: Hydrema 912, Bell B20 & Volvo A30 dump trucks  
*Excavators fitted with quick hitch, check valves and safe load indicators. Tier 4 Final & Stage V compliant. Attachments available include Hydraulic Breakers, Riddle Buckets, Hydraulic Concrete Munchers and Select-a-Grabs.*



## SMALL PLANT

Mini/Midi Diggers: 3.5t, 6t and 8t zero tail swing  
 Site Dumpers: 3t and 6t swivel tip (*road legal*), 9t straight tip (*road legal*)  
 Compaction: Hamm12 & 13 twin drum rollers



## ROAD SWEEPERS

Johnston V652 and MaxPowa V65 series dual sweepers  
*FORS silver accredited and equipped with 360 Camera system, reverse radar, hand lance, gully wander hose. Euro 6 compliant.*



## TIPPER LORRIES & LOWLOADER SERVICE

8 wheel steel bodied tipper lorries (*Daywork or Cart & Tip service available*)  
 Lowloader - Up to 80t gross capacity (*Daywork or job price service available*)  
 Plant Lorry - Up to 32t gross capacity (*Daywork or job price service available*)  
*FORS silver accredited. Euro 6 compliant.*



## TRACTORS & ATTACHMENTS

Selection of Agricultural tractors  
*Attachments available are dust suppression bowsers/vacuum tankers, plant trailer, tipping trailer. Tier 4 Final compliant.*

# Hire Rates

Hourly rates are quoted on basis of minimum 9hrs/day, and do not include transport charges. Operated plant overtime to be charged after 9hrs a day and on Saturdays and Sundays. Fuel to be supplied by AEF/Hirer \*. Plant is hired subject to CPA model conditions for the hire of plant.



EQUIPMENT	Self Drive	RATE	UNIT
<b>COMPACTION</b>			
120 / 135* Sit-on Rollers	✓	£	
<b>SITE DUMPERS</b>			
3t Swivel	✓	£	
6t Swivel	✓	£	
9t Straight Tip		£	
<b>EXCAVATORS (Tracked)</b>			
Mini Digger 3.5t		£	
Midi Digger 6t		£	
Excavator 8t		£	
Excavator 10t		£	
Excavator 14t		£	
Excavator 22t (GPS ready)		£	
<b>EXCAVATOR (Attachments)</b>			
Hydraulic Breaker		£	
Hydraulic Concrete Muncher		£	
Hydraulic Select-a-Grab		£	
Riddle bucket		£	
Pallet Forks		£	
<b>DOZERS</b>			
Komatsu D51PX - LGP (2D, 3D or GPS ready)		£	
Komatsu D61PX - LGP (2D, 3D or GPS ready)		£	
<b>DUMP TRUCKS</b>			
Hydrema 912F		£	
Bell B20E LGP tyres		£	
Volvo A30G LGP tyres		£	
<b>LORRIES &amp; ROAD SWEEPERS</b>			
8 wheel tipper		£	
Road Sweeper (Bucher dual sweep)		£	
<b>AGRICULTURAL TRACTORS</b>			
Tractor only		£	
Tractor & Dust Suppression Tanker		£	
<b>RECYCLED AGGREGATES</b>			
3"-4" Down crushed hardcore (6F2/5)		£	
2" Down crushed hardcore		£	
Road Planings		£	

\*delete as appropriate

01664 822797

01664 822797